

## Introducing the TrueSort grading program



The Ellips EFG400 fruit and vegetable grading system needed a design refresh.

The XP version is updated to the latest graphical user interface technology.

The new and clean look is originally designed in Eindhoven.

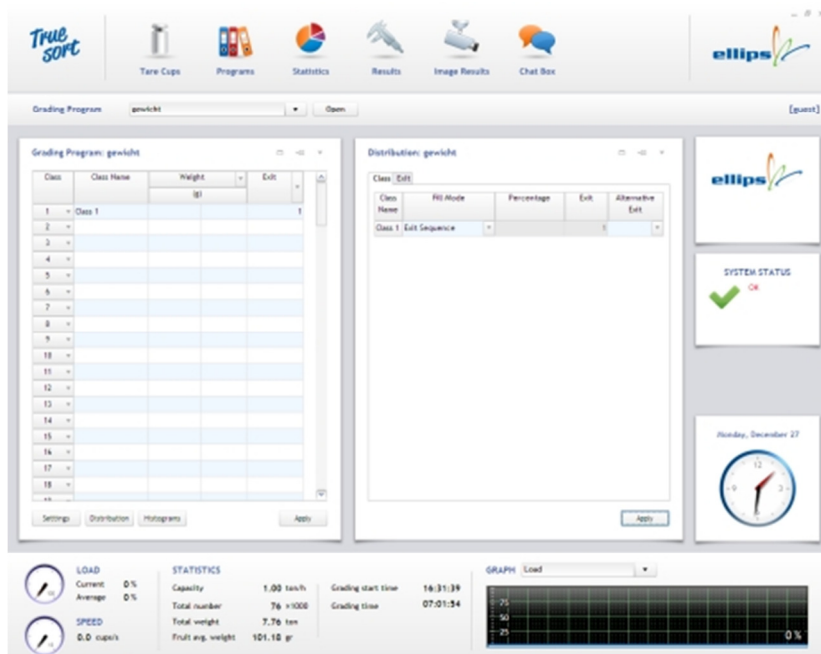
Eindhoven, the city with the slogan: Leading in technology and home of the famous Design Academy.

The look is clean, and has a white background to give you the idea there is a lot of space although there is a lot of information to show.

Development took over a year, because new Microsoft tools need to be mastered by our engineers and nice icons must be selected for our international customers.

The startup screen is organized with a top bar, sidebar, status and information part and room to have overview over your programs and distribution options.

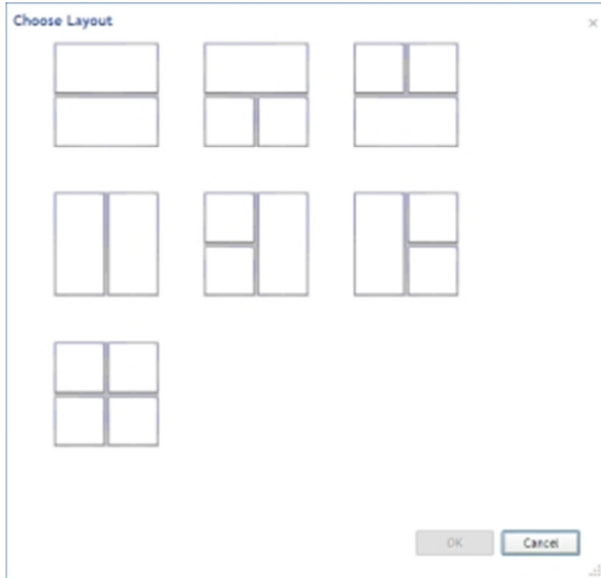
The sidebar with an analogue clock and room to put post-its is inspired by the latest PC operating systems.



If your grading program requires more room, the status and information part called dashboard can be shrunk.

Information is always there: active grading program is opened and docked automatically, as well as the distribution of the products in your exits.

If you choose to position them in another part of your windows pane, Ellips new TrueSort Gui is a must have.



Truesort is tested intensively by clients who helped to get the most innovative user graphical interface there is in the market.

Clients experienced higher productivity and liked the info was there in a blink of an eye.

Also a sophisticated program mechanism is implemented for Super Users and Normal Users, as commonly seen in big grading companies and packing houses.

In the new screen, the top bar icons tell the story:



to see the measurement results in table lay-out.



to tare the cups in a weighing system.



to see the camera pictures and the measurement overlays.



to see the list of grading programs.



go to the statistics.

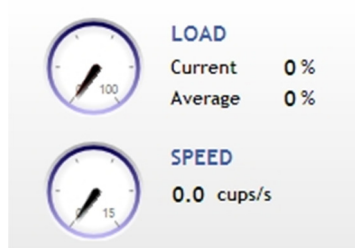


start a chat session with a Ellips dealer or specialist.

The status and information part is well organized as if it was your car dashboard. Vital information during the grading process is always nearby.

### Statistics

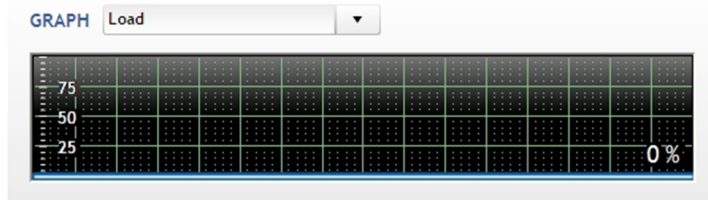
STATISTICS	
Capacity	1.00 ton/h
Total number	76 ×1000
Total weight	7.76 ton
Fruit avg. weight	101.18 gr



### Load and Speed

### Grading Time

Grading start time	16:31:39
Grading time	07:01:54



Graph of Load, Speed, Temperature, Memory Use, CPU Temperature and CPU Usage can be selected.

Even a small dashboard can be selected if you need more room for your grading program.

Ellips thinks this new TrueSort User Interface is a must have for **new** machines.

Machines having the EFG400 XP interface considering an upgrade, please get in contact with our sales department at [info@ellips.nl](mailto:info@ellips.nl) .