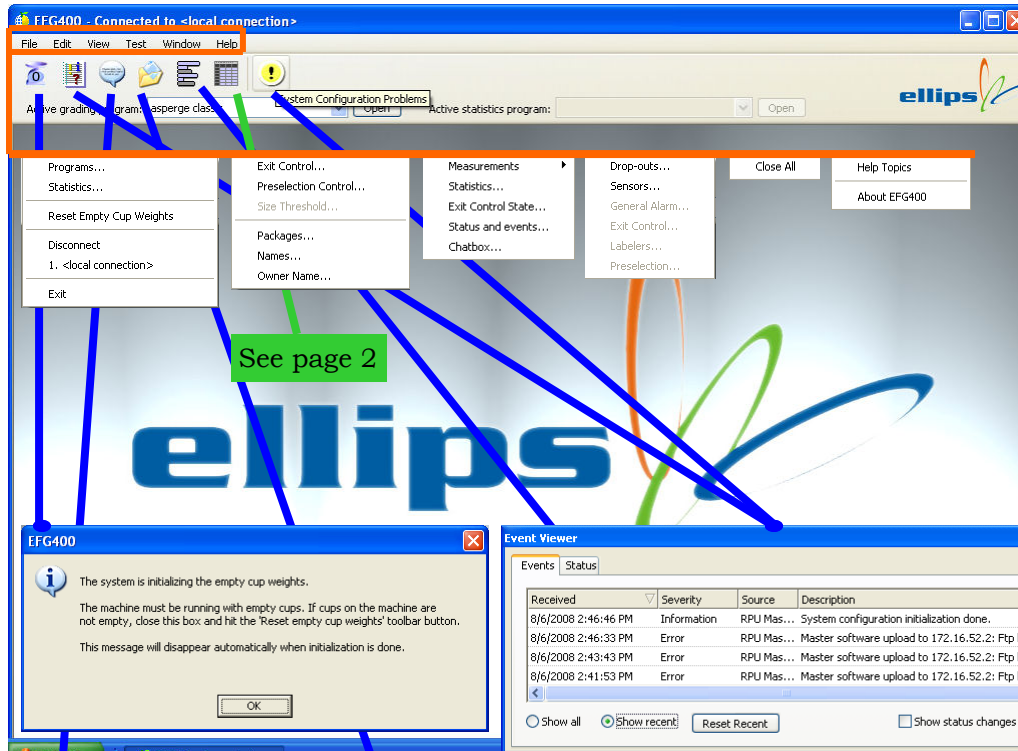


EFG400 User's Instruction Card



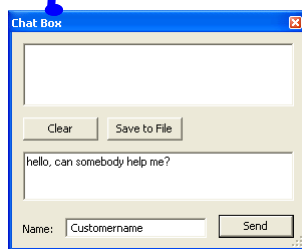
This is the start-up screen of the Ellips EFG400 grading program.

The menu bar items are there to find your way in the program.

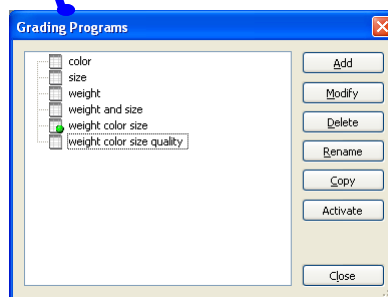
The pictograms are shortcuts to most frequently used items.

The event viewer shows status information and history of your EFG400 system.

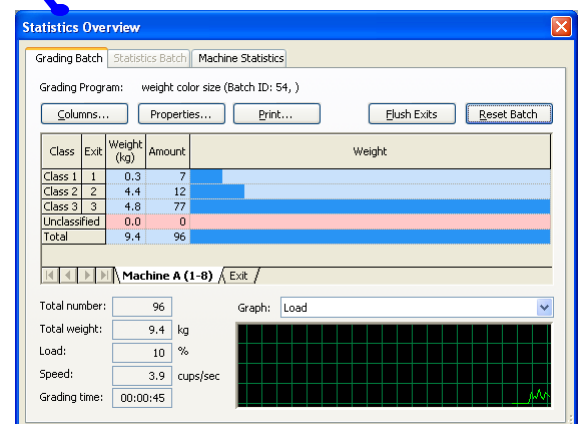
The fist icon is to tare weight: The weight of the empty cups is set to "0".



After making an internet or telephone modem connection with the Ellips Service Centre, you can chat with an EFG400 specialist.



All available programs are shown here, the active program is marked with a green bullet. Programs can be copied, created and modified off-line. An example of a program can be seen in page 2 of this card.

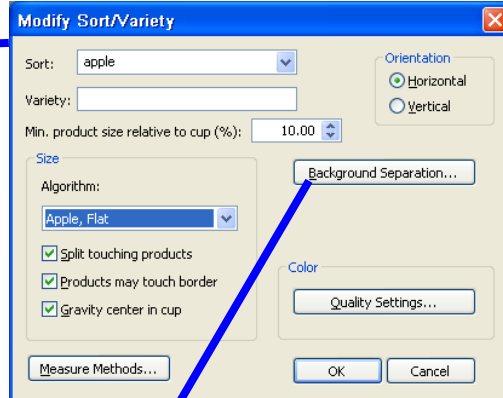
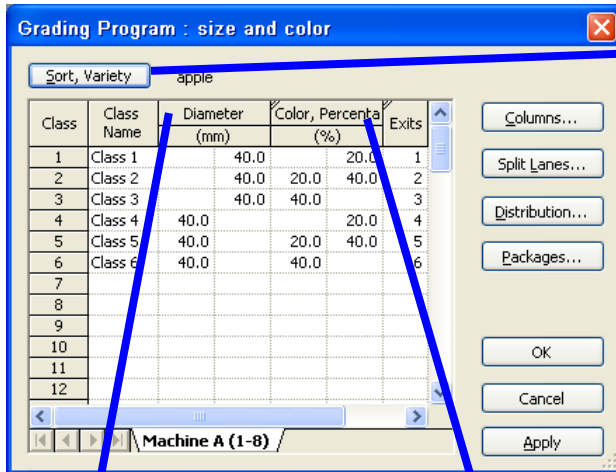


Statistics per Class and exit. By clicking "Columns" percentages and box weights can be selected if available. The Graph can show the machine load, CPU temperature and Memory usage. Also the grading time for this product can be seen in this screen.

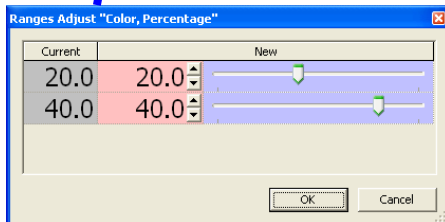


Urkhoenserweg 11
5641 KA Eindhoven
The Netherlands
Phone: +31 (0) 40 245 6540
Fax: +31 (0) 40 246 7183

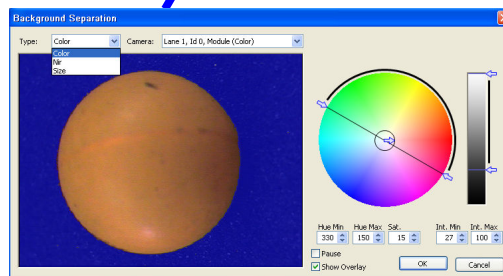
EFG400 User's Instruction Card



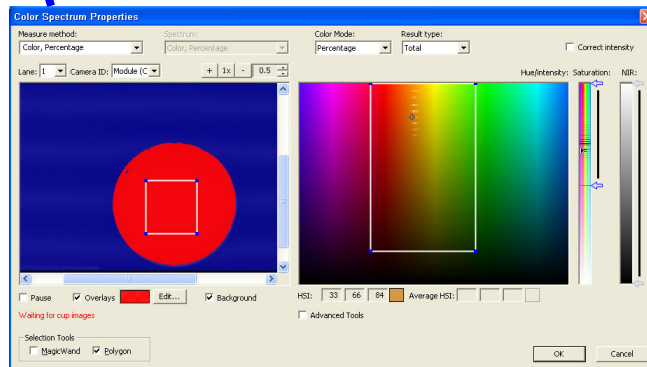
For each Grading Program you can adjust the Size Algorithm and Background Separation by clicking the Sort, Variety button .



A right click on the column header Diameter or Color shows the slider adjustment box. Click Ok and Apply in the Grading Program to effectuate the changes

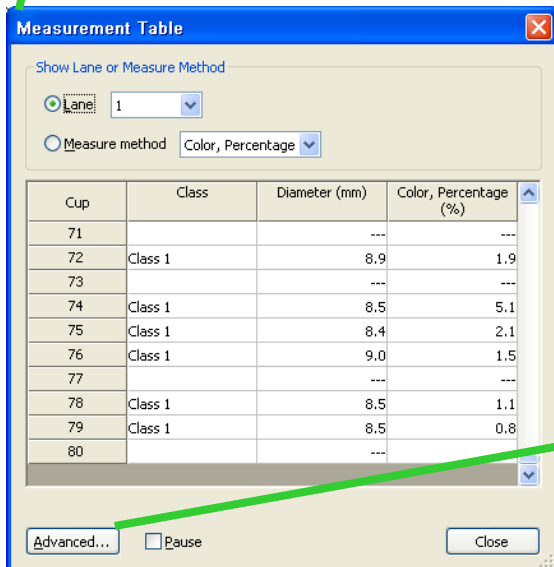


For each Type of camera picture and all cameras the picture of the product must be clear, and the background must be blue.

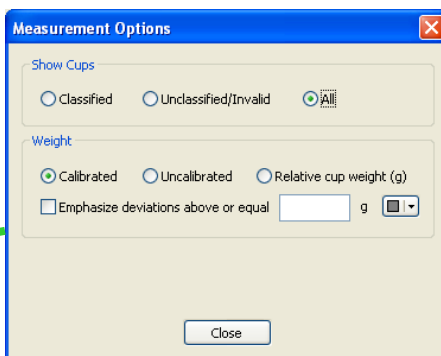


Adjusting Color Spectrum Properties is as easy as Photo editing software.

This icon in the main screen shows the Measurement Table.



Measurements can be shown per Lane or Measure method.



The Advanced button is to filter the measurement results. Default setting is All, and if everything is working fine the Unclassified/Invalid filter must show nothing